

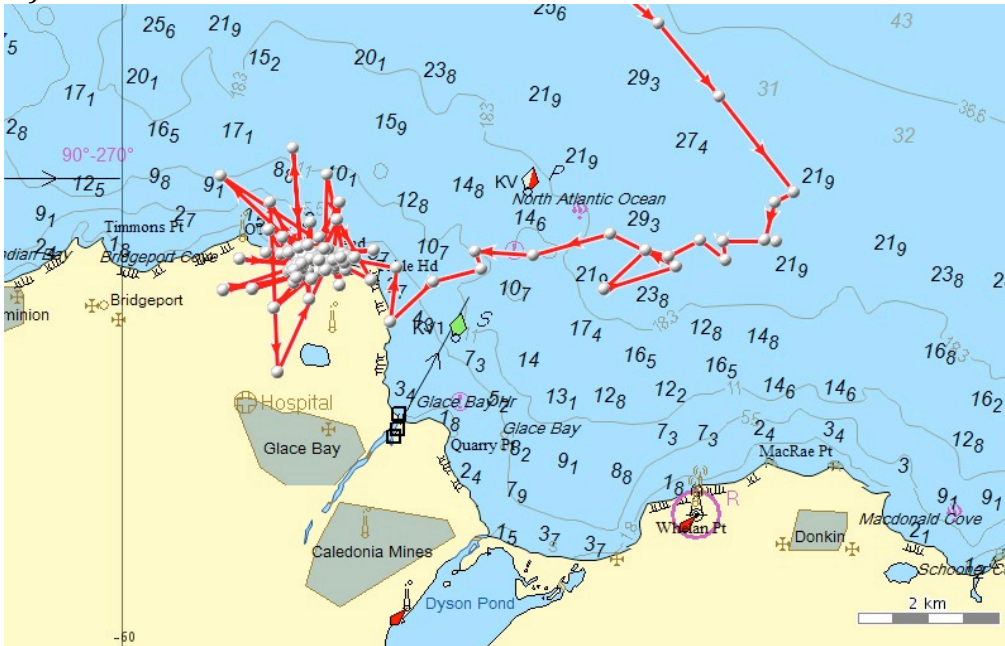
Most Recent Coordinates of Satellite Tags still Transmitting:

1.) Coordinates: $47^{\circ} 53' 17''$ N and $60^{\circ} 43' 55''$ W

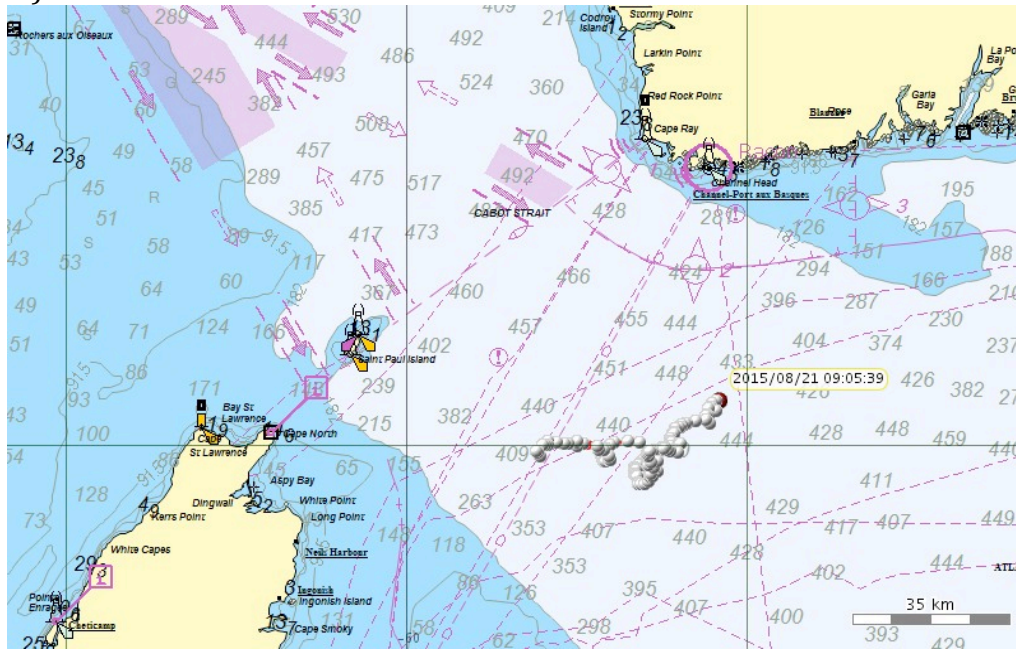
This one must have had a strange transmission with the satellite because it shows it travelled to Spain and back since yesterday, obviously not the case considering the location in the Cabot Strait is still the same.



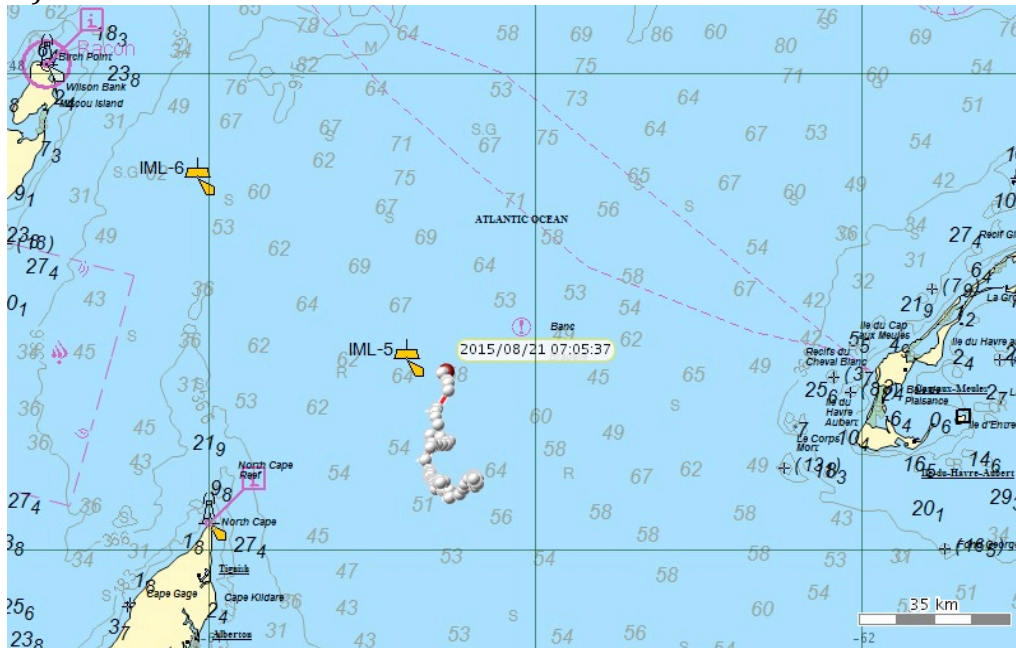
2.) Coordinates: $46^{\circ} 13' 07''$ N and $59^{\circ} 57' 42''$ W



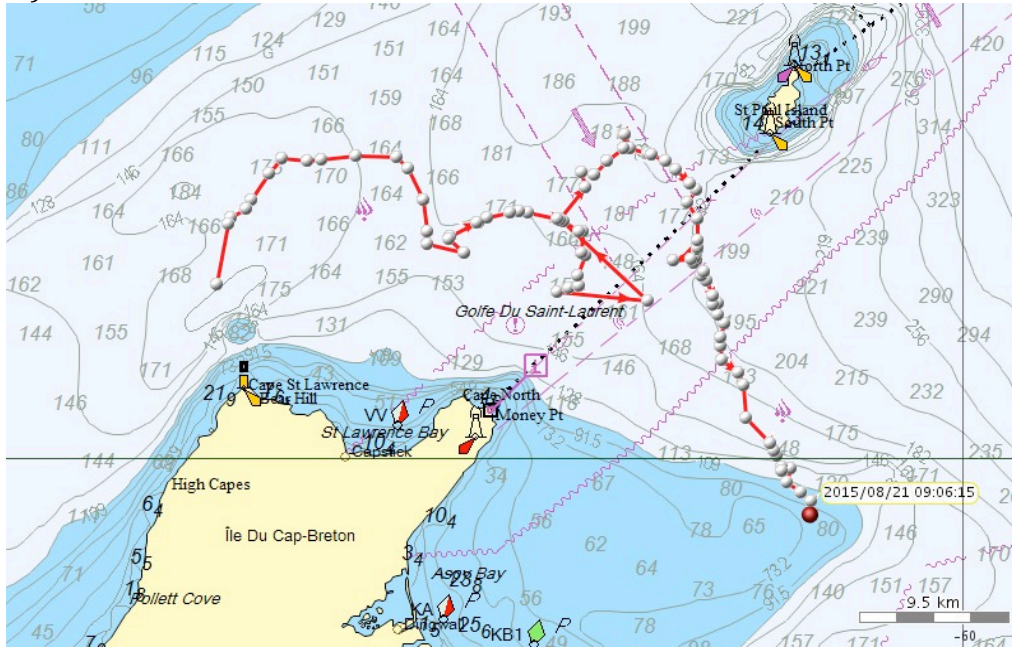
3.) Coordinates: 47° 05' 26" N and 59° 05' 31" W



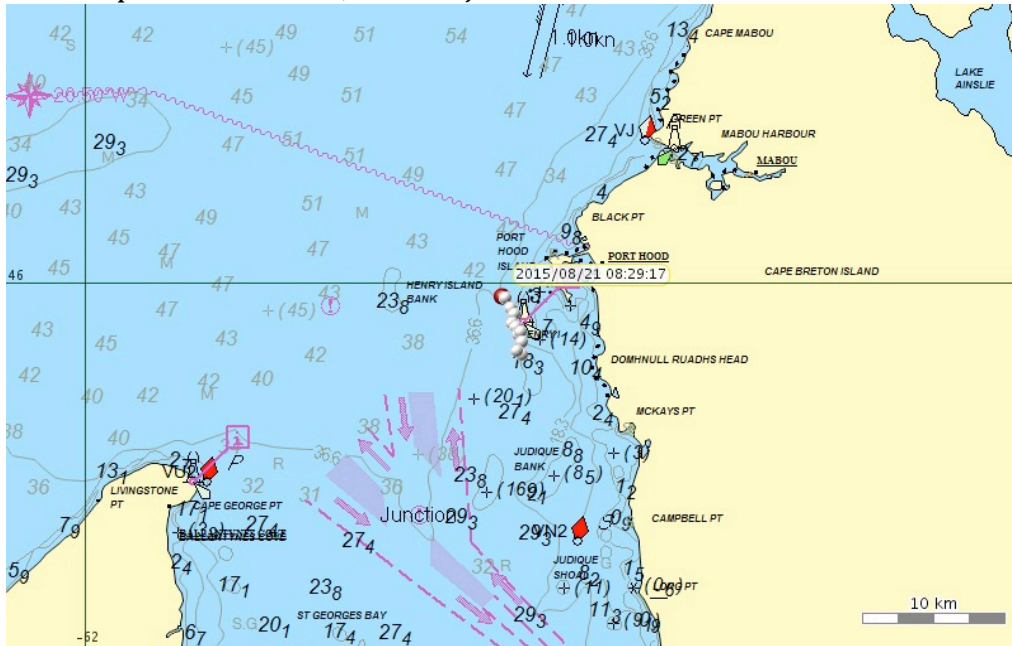
4.) Coordinates: 47° 22' 29" N and 63° 22' 29" W



5.) Coordinates: 46° 58' 31" N and 60° 07' 35" W



6.) Coordinates: 45° 59' 28" N and 61° 37' 18" W
Hard to pick this one out, but it is just off Port Hood.



This image shows all tags still transmitting:

